

Quick Installation Guide

■ Specifications

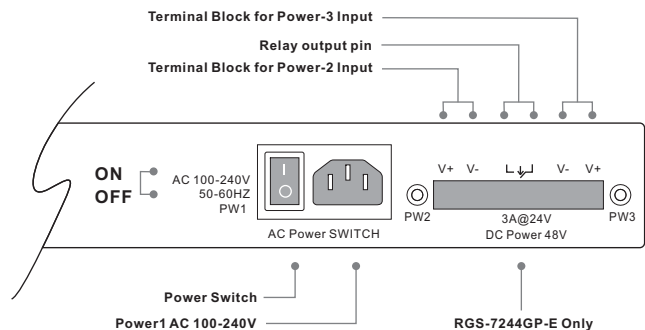
RGS-7244GP series are managed redundant ring Ethernet switch with 24x10/100/1000Base-(TX) ports and 4x1000Base-X SFP ports. With completely support of Ethernet Redundancy protocol, O-Ring (recovery time < 20ms over 250 units of connection) and MSTP/RSTP/STP (IEEE 802.1s/w/D), can protect your mission-critical applications from network interruptions or temporary malfunctions with its fast recovery technology. ORing's thunder switch series provide advanced IP-based bandwidth management which can limit the maximum bandwidth for each IP device. User can configure IP camera and NVR with more bandwidth and limit the bandwidth of other device bandwidth. ORing's thunder switch series also support application-based QoS. Application-based QoS can set highest priority for data stream according to TCP/UDP port number. ORing's special IP police function can only permit allowed IP address with MAC address to access the networking. Hacker cannot access the IP surveillance network without permission. It can avoid hacker from stealing video privacy data and attacking IP camera, NVR and controllers. ORing's thunder switch series also provided advanced DOS/DDOS auto prevention. If there is any IP flow become big in short time, ORing's thunder switch will lock the source IP address for certain time to prevent the attack. It's hardware based prevention so it can prevent DOS/DDOS attack immediately and completely. And all functions of **RGS-7244GP series** can also be managed centralized and convenient by Open-Vision v3.0 or above, as well as the Web-based interface, Telnet and console (CLI) configuration. Therefore, the

Features

- > Support 24x 10/100/1000 Base-T(X) and 4x1000Base-X SFP ports
- > Support Jumbo frame up to 9K Bytes
- > Supports O-Ring (recovery time < 20ms over 250 units of connection), MSTP/RSTP/STP (IEEE 802.1s/w/D) for Ethernet Redundancy
- > Supports IP-based bandwidth management
- > Supports application-based QoS management
- > Supports IP police security function
- > Supports DOS/DDOS auto prevention
- > IGMP v2/v3 (IGMP snooping support) for filtering multicast traffic
- > Supports SNMP v1/v2c/v3, RMON and 802.1Q VLAN Network Management
- > Support ACL, 802.1x User Authentication for security
- > Multiple notification for warning of unexpected event
- > Windows utility (Open-Vision) support centralized management and configurable by Web-based interface, Telnet and Console(CLI)
- > Support LLDP Protocol
- > Event notification through Syslog, Email, SNMP trap, and Relay Output (for -E module)
- > 19 inches rack mounted design

Product Interface

● **Back View**

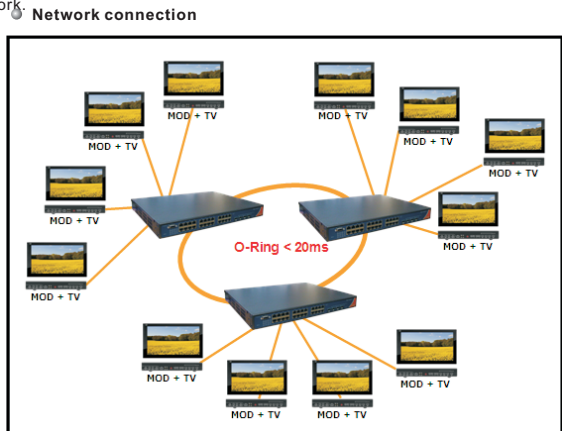


O-ring Switch Model		RG5-7244GP	RG5-7244GP-E
Physical Ports			
10/100/1000 Base-T(X) Ports in RJ45 Auto MDI/MDIX		24	
1000Base-X SFP port		4	
Technology			
Ethernet Standards	IEEE 802.3 for 10Base-T, IEEE 802.3u for 100Base-T(X), IEEE 802.3ab for 1000Base-T, IEEE 802.3 for 1000Base-X, IEEE 802.3x for Flow control, IEEE 802.3ad for LACP (Link Aggregation Control Protocol), IEEE 802.1p for CoS (Class of Service), IEEE 802.1Q for VLAN Tagging, IEEE 802.1D for STP (Spanning Tree Protocol), IEEE 802.1w for RSTP (Rapid Spanning Tree Protocol) IEEE 802.1s for MSTP (Multiple Spanning Tree Protocol), IEEE 802.1x for Authentication IEEE 802.1AB for LLDP (Link Layer Discovery Protocol)		
MAC Table	8K		
Priority Queues	4		
Processing	Store-and-Forward		
Switch Properties	Switching latency: 7 us Switching bandwidth: 56Gbps Max. Number of Available VLANs: 256 IGMP multicast groups: 128 for each VLAN Port rate limiting: User Define		
Jumbo frame	Up to 9K Bytes		
Security Features	Enable/disable ports, MAC based port security Port based network access control (802.1x) VLAN (802.1Q) to segregate and secure network traffic Supports Q-in-Q VLAN for performance & security to expand the VLAN space Radius centralized password management SNMPv3 encrypted authentication and access security		
Software Features	STP/RSTP/MSTP (IEEE 802.1D/w/s), Redundant Ring (O-Ring) with recovery time less than 20ms over 250 units , TOS/Diffserv supported Quality of Service (802.1p) for real-time traffic, VLAN (802.1Q) with VLAN tagging and GVRP supported IGMP Snooping, IP-based bandwidth management, Application-based QoS management DOS/DDOS auto prevention, Port configuration, status, statistics, monitoring, security DHCP Client/Server		
Network Redundancy	O-Ring, STP, RSTP, MSTP		
RS-232 Serial Console Port	RS-232 in DB9 connector with console cable. 115200bps, 8, N, 1		
LED Indicators			
Power Indicator (PWR)	Green: Power indicator For AC	Green: Power indicator For AC and DC	
Power1 Indicator (PWR1)	N/A	Green : Indicate Power-1 input	
Power2 Indicator (PWR2)	N/A	Green : Indicate Power-2 input	
Power3 Indicator (PWR3)	N/A	Green : Indicate Power-3 input	
System Ready Indicator (STA)	Green : Indicate that the system is ready. The LED is blinking when the system is upgrading firmware		
Ring Master Indicator (R.M)	Green: Indicate system operated in Ring Master mode		
O-Ring Indicator (Ring)	Green: Indicate system operated in O-Ring mode Blinking to indicate Ring is broken		
Fault Indicator (Fault)	N/A	Amber: Indicate unexpected event occurred	
Syssem Runnig Indicator (RUN)	Green : System operated continuously		
Supervisor Login Indicator (RMT)	Green : System is accessed remotely		
Reset To Default Running Indicator (DEF)	Green : System reset to default configuration		
Ping Command To The Switch Indicator (Ping)	Green : System is processing "PING" request		
10/100/1000 Base-T(X) RJ45 Port Indicator	Left Green for Link/Act indicator Right Amber for full-duplex indicator		
1000Base-X SFP Port Indicator	Green for port Link/Act.		
Fault Contact			
Relay	N/A	Relay output to carry capacity of 3A at 24VDC	
Power			
Input power	100 ~ 240VAC with power cord	100~240VAC with power cord, dual 36 ~72VDC power inputs at 6-pin terminal block	
Power consumption(Typ.)	36 Watts		
Overload current protection	Present		
Physical Characteristic			
Enclosure	19 inches rack mountable		
Dimension (W x D x H)	443.7 (W) x 200 (D) x 44 (H) mm (17.47x7.87x1.73 inch)	431 (W) x 342 (D) x 44 (H) mm (16.96x13.46x1.73 inch)	
Weight (g)	2700g	4250g	
Environmental			
Storage Temperature	-40 to 85°C (-40 to 185°F)		
Operating Temperature	-40 to 70°C (-40 to 158°F)		
Operating Humidity	5% to 95% Non-condensing		
Regulatory approvals			
EMI	FCC Part 15, CISPR (EN55022) class A		
EMS	EN61000-4-2 (ESD), EN61000-4-3 (RS), EN61000-4-4 (EFT), EN61000-4-5 (Surge), EN61000-4-6 (CS), EN61000-4-8, EN61000-4-11		
Shock	IEC60068-2-27		
Free Fall	IEC60068-2-32		
Vibration	IEC60068-2-6		
Warranty	5 years		

Managed Gigabit Ethernet Switch

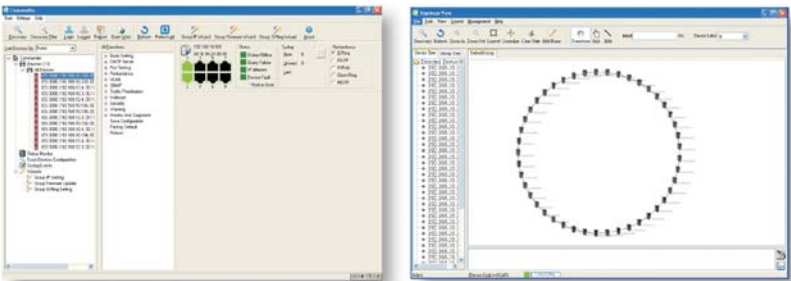
❖ Open-Vision

ORing's switches are intelligent switches. Different from other traditional redundant switches, ORing provides a set of Windows utility (Open-Vision) for user to manage and monitor all of industrial Ethernet switches on the industrial network.

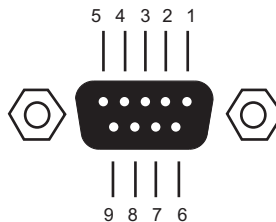


- **Monitoring and Configuration interface**

- **Topology View**



✦ Console Port Pin Assignment



```
Setting: 115200 bps, 8, N, 1
User name: admin
Password: admin
```

Pin#	RS232 Signal
1	-
2	TXD
3	RXD
4	-
5	GND
6	-
7	-
8	-
9	-
Console port act as DCE	

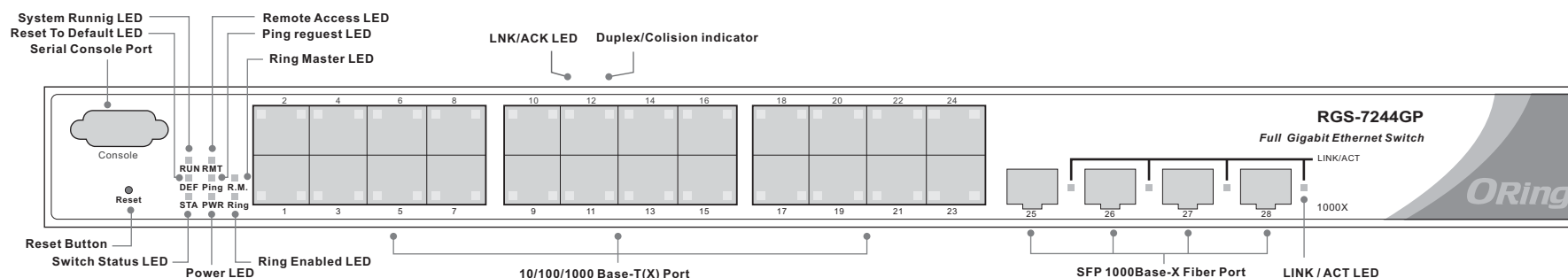
Quick Installation Guide

RGS-7244GP/-E

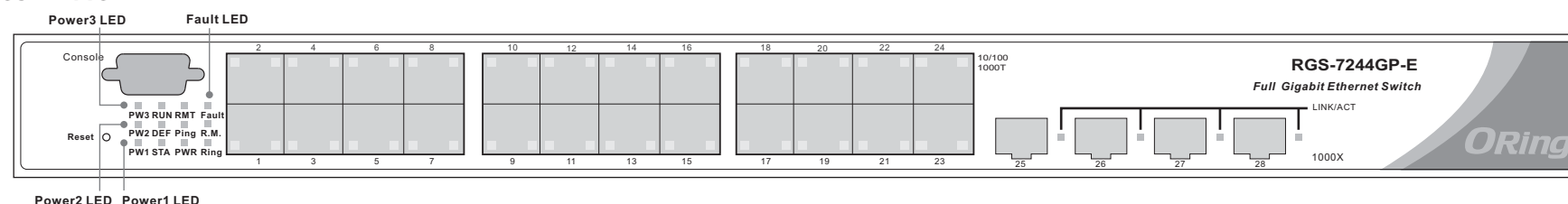
Managed Gigabit Ethernet Switch

Front Panel

RGS-7244GP

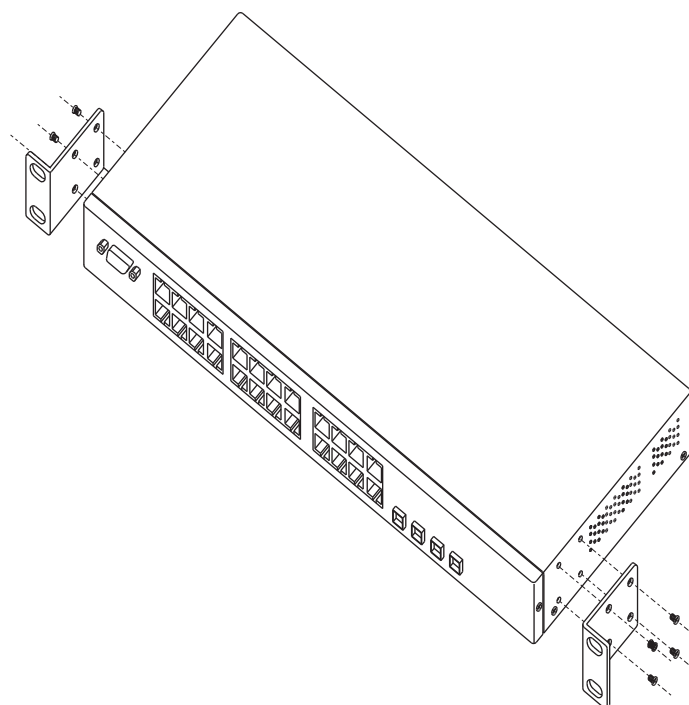


RGS-7244GP-E

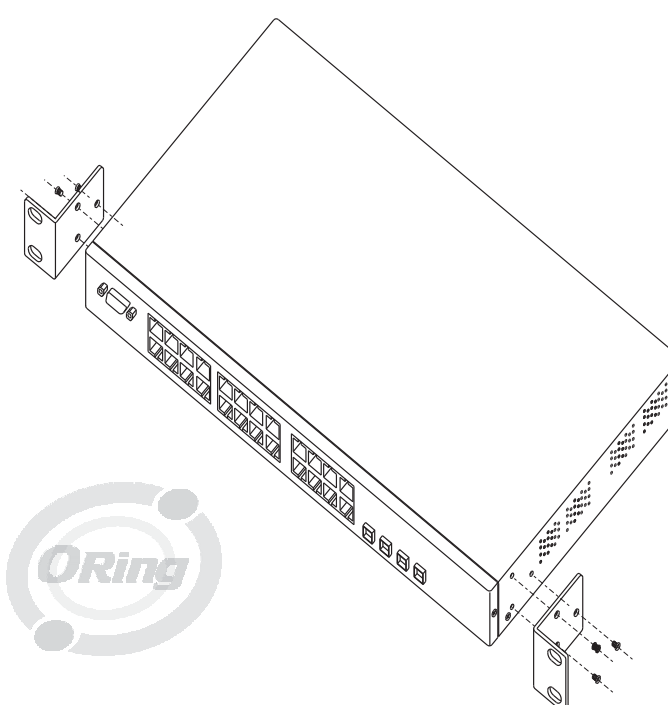


Installation

RGS-7244GP Rack-mounted Install Step



RGS-7244GP-E Rack-mounted Install Step



Accessory



Packing list

Model name	Model Description	Accessory
RGS-7244GP_US	Industrial 28-port rack mount managed Gigabit Ethernet switch with 24x10/100/1000Base-T(X) and 4x1000Base-X, SFP socket, US power cord	⑩ X 1, ⑩ X 1, ⑩ X 1, ⑩ X 24, ⑩ X 4, ⑩ X 8, ⑩ X 1, ⑩ X 1
RGS-7244GP_EU	Industrial 28-port rack mount managed Gigabit Ethernet switch with 24x10/100/1000Base-T(X) and 4x1000Base-X, SFP socket, EU power cord	⑩ X 1, ⑩ X 1, ⑩ X 1, ⑩ X 24, ⑩ X 4, ⑩ X 8, ⑩ X 1, ⑩ X 1
RGS-7244GP-E_US	Industrial 28-port rack mount managed Gigabit Ethernet switch with 24x10/100/1000Base-T(X) and 4x1000Base-X, SFP socket, enhanced version, US power cord	⑩ X 1, ⑩ X 1, ⑩ X 1, ⑩ X 24, ⑩ X 4, ⑩ X 6, ⑩ X 1, ⑩ X 1
RGS-7244GP-E_EU	Industrial 28-port rack mount managed Gigabit Ethernet switch with 24x10/100/1000Base-T(X) and 4x1000Base-X, SFP socket, enhanced version, EU power cord	⑩ X 1, ⑩ X 1, ⑩ X 1, ⑩ X 24, ⑩ X 4, ⑩ X 6, ⑩ X 1, ⑩ X 1