

## DS-K2600 Series

### Network Access Controller

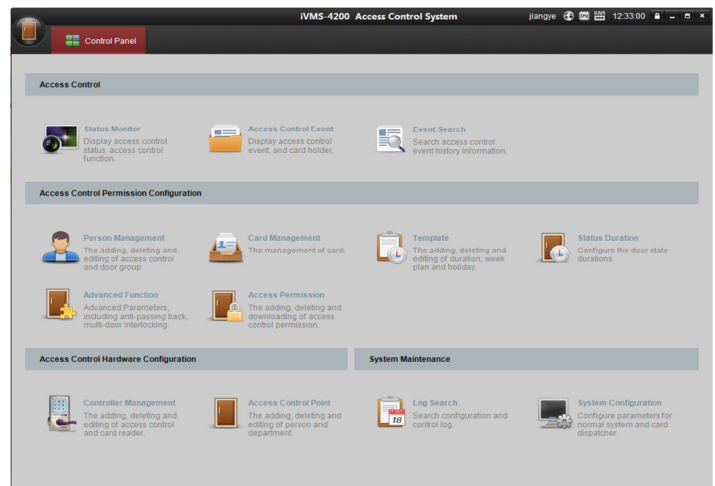
- TCP/IP Network Communication, w/Self-Adaptive Network Interface
- Encrypted Communication Data
- 100,000 (Expand to 200,000) Card Info, 300,000 (Expand to 600,000) Access Control Events
- Multi-Door Interlocking (DS-K2602 and DS-K2604), Anti-Passback, Multi-Card, First Card, Super Card, and Super Password
- Zone Alarm Input
- RS-485 and Wiegand Card Reader Interfaces

Hikvision's DS-K2600 Series access controllers are designed with the latest communication protocols such as TCP/IP and RS-485 interfaces. The communication data is encrypted to improve the system security. The controller also supports offline operation and is designed with a tamper-proof switch.

**Available Models:** DS-K2601: Single-door access controller  
DS-K2602: Double-door access controller  
DS-K2604: Four-door access controller



## Software Interface

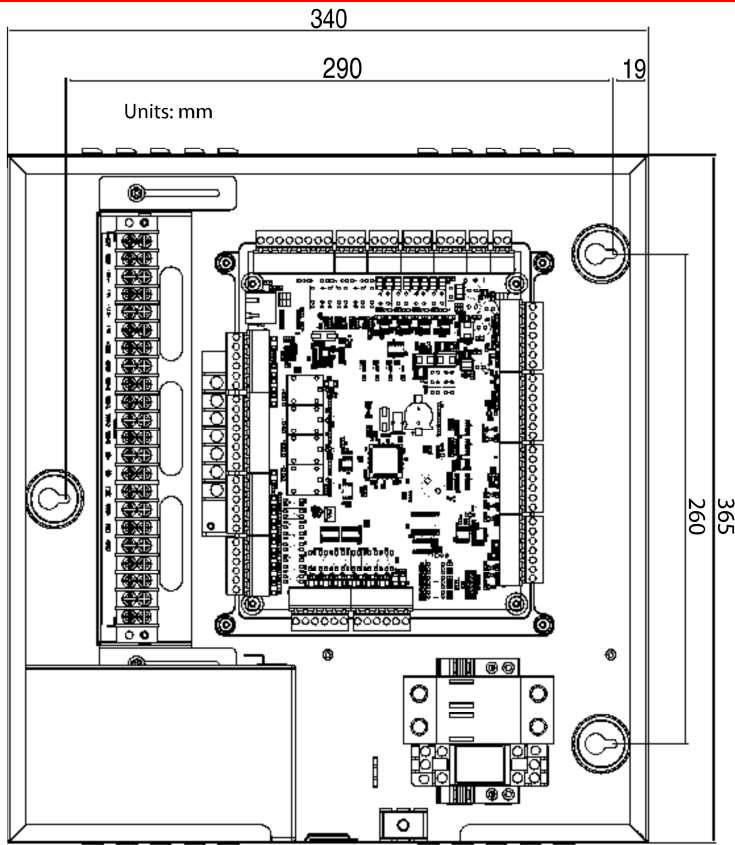


Client Software Interface

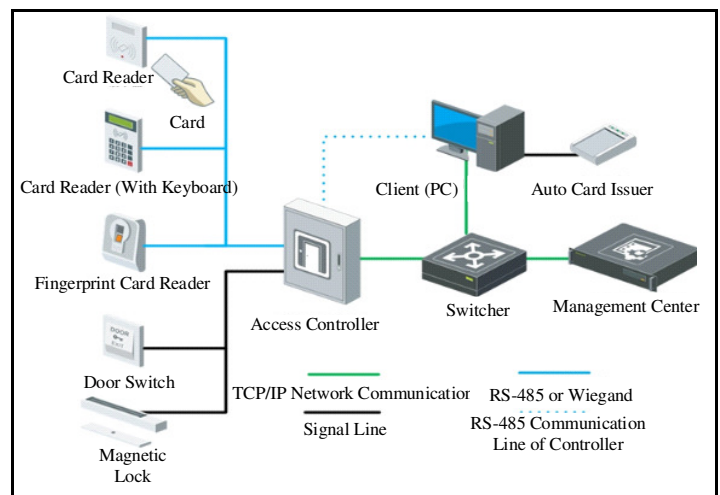
# Specifications

	DS-K2601	DS-K2602	DS-K2604
Processor	32-bit		
Capacity	16 MB		
Doors Controlled	1	2	4
Uplink Communication Interface	TCP/IP, RS-485		
Downlink Communication Interface	RS-485, Wiegand (W26/W34)		
Storage	Card information: 100,000 (200,000 expandable) Access control events: 300,000 (600,000 expandable)		
LED Indicator	Power supply status, communication status, working status		
Built-in Clock	Yes		
Accessible Card Reader	2 card readers (RS-485 interface) 2 card readers (Wiegand interface)	4 card readers (RS-485 interface) 4 card readers (Wiegand interface)	8 card readers (RS-485 interface) 4 card readers (Wiegand interface)
Input Interface	Alarm input × 4, door sensor × 1, exit button × 1, case input × 2, tamper alarm × 1	Alarm input × 4, door sensor × 2, exit button × 2, case Input × 4, tamper alarm × 1	Alarm input × 4, door sensor × 4, exit button × 4, case input × 8, tamper alarm × 1
Output Interface	Lock relay × 1, alarm relay × 2	Door relay × 2, alarm relay × 4	Lock relay × 4, alarm relay × 4
Working Temperature	-4° to 140° F (-20° to 60° C)		
Working Humidity	10% to 90% (non-condensing)		
Dimensions (L × W × H)	14.6" x 13.6" x 3.5" (370 mm x 345 mm x 90 mm)		
Certification	CE, FCC, UL		
Working Voltage	12 VDC, 1A		
Power Dissipation (w/Load)	≤ 50 W	≤ 100 W	
Power Dissipation (w/o Load)	≤ 4 W		

## Dimensions



## Typical Application



Topological Graph