

DS-1663ZJ



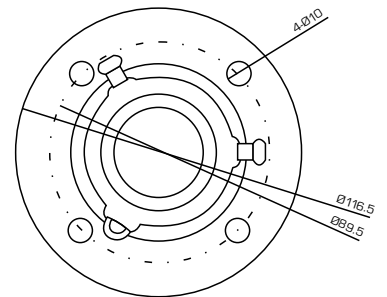
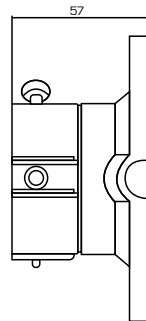
FEATURES:

- Aluminum alloy material with surface spray treatment
- General design for indoor/outdoor
- Design of cable entrance hole
- Complementary rubber blanket pad for waterproofness

unit: mm

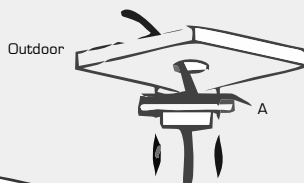
DS-1663ZJ

SPEC	
Parameters	Pendent mount
Colour	Hik White
Feature	Suitable for speed dome cameras
Material	Aluminum alloy
Dimension	116.5 x 57mm
Weight	380g



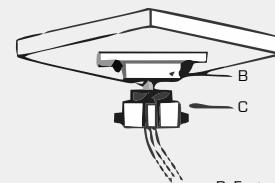
Installation View

1. Choose the appropriate wall to mount the ceiling, and rubber blanket should be added when assembling outdoors



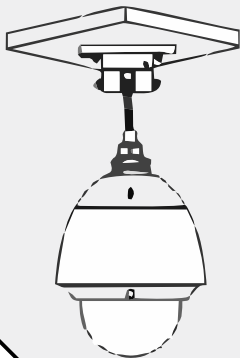
A: Waterproof rubber blanket

2. Fix adaptor to ceiling plate

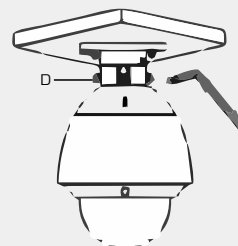


B: Fasten the snap joint fixing screw
C: Adaptor

3. Fix with tightening screw, thread the cable and install the speed dome



4. Tighten up the screw and complete the installation



D: Set screw